

MATH 123

(Day 2)

The Fourth Dimension

Richard Hammack

www.people.vcu.edu/~rhammack/Math123/



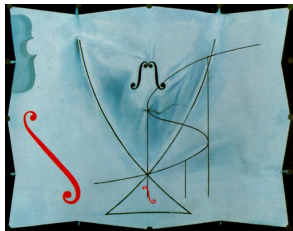
Salvador Dalí

1907–1989



Salvador Dalí

1907–1989

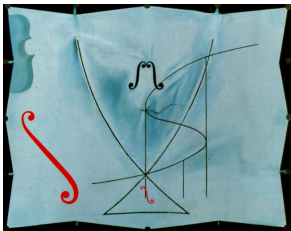


The Swallow's Tail, 1983

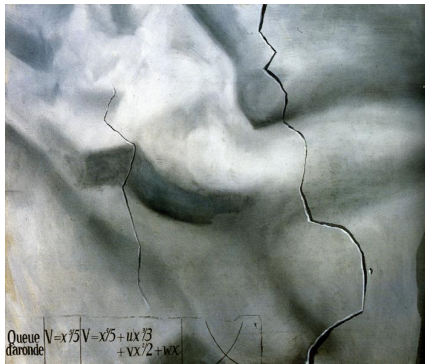


Salvador Dali

1907–1989



The Swallow's Tail, 1983



Topological Abduction of Europe - Homage to René Thom, 1983

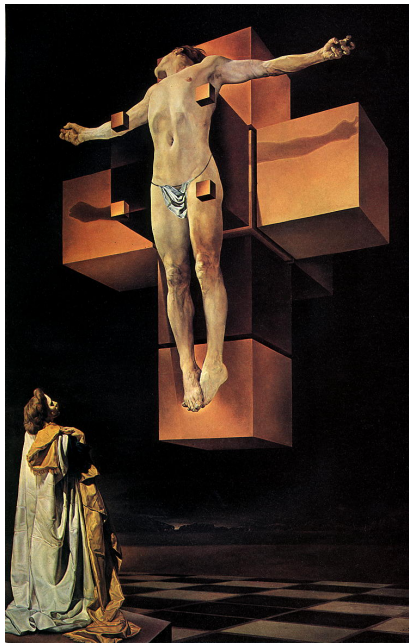


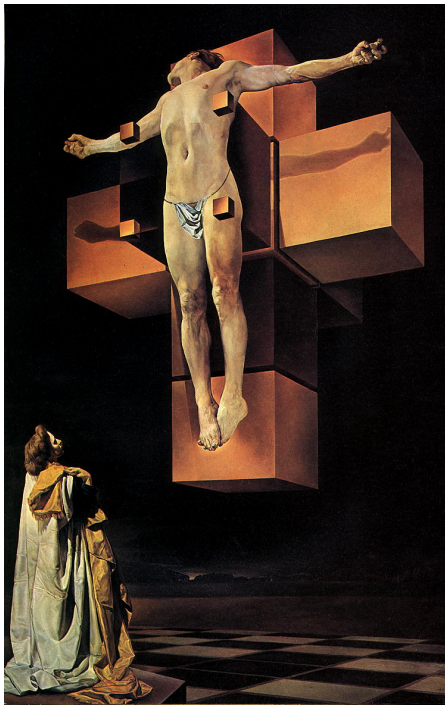
Dali with mathematician Thomas Banchoff, 1975

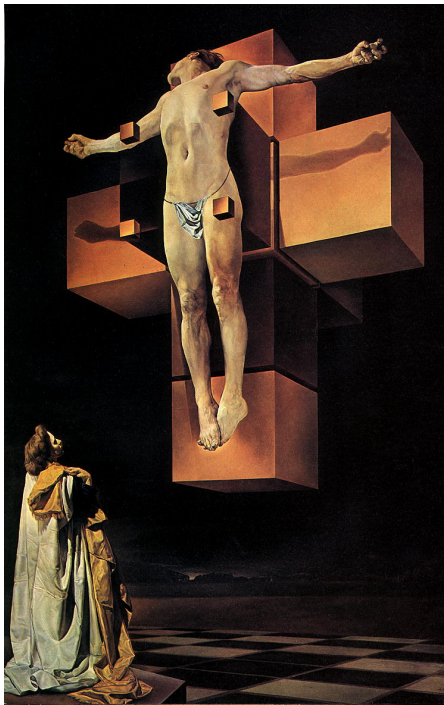


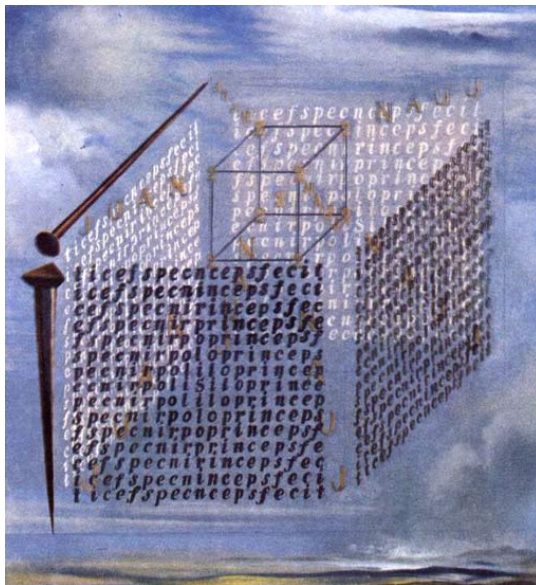
Salvador Dalí, *In Search of the Fourth Dimension*, 1979

Salvador Dali,
Corpus Hypercubus,
oil on canvas, 1954









Salvador Dali, 1960

Next Time:

Visualizing the Fourth Dimension